

EVIO Labs Medford (pka Kenevir Research)
540 East Vilas Road, Suite F, Central Point, OR 97502
541-668-7444 / OLCC 010-1001626980D / www.EVIO Labs.com

SRF Bubba 20 NOCTUA WELLNESS



Confident Cannabis ID: 2012KR0092.6564

Sample ID: M202061-02

Matrix: Hemp

METRC Batch #:

Sampling Method/SOP: Client

Date Sampled: NA

Date Accepted: 12/15/20

Harvest/Process Lot ID:

Batch ID:

Batch Size (g):

Unit for Sale:

Harvest/Production Date:

Cannabinoid Analysis

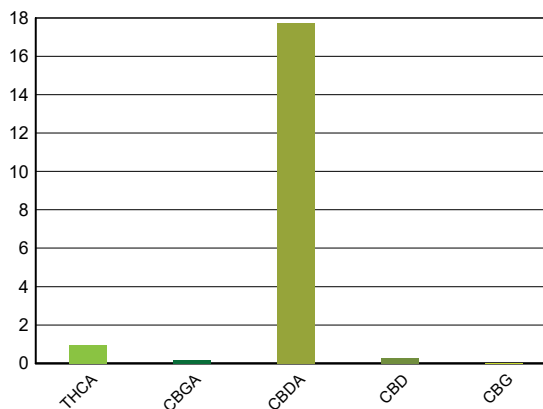
FOR INFORMATIONAL USE ONLY - NOT FOR REGULATORY PURPOSES

Date/Time Extracted: 12/16/20 08:46

Analysis Method/SOP: SOP.T.40.020

Date/Time Analyzed: 12/17/20 01:26

Cannabinoids	LOQ(%)	mg/g	% weight	Cannabinoid Profile
Total THC ((THCA*0.877)+Δ9THC)		8.47	0.847	
Total CBD ((CBDA*0.877)+CBD)		158.05	15.805	
THCA	0.0400	9.66	0.966	
delta 9-THC	0.0400	< LOQ	< LOQ	
delta 8-THC	0.0400	< LOQ	< LOQ	
THCV	0.0400	< LOQ	< LOQ	
CBGA	0.0400	1.57	0.157	
CBDA	0.0400	177.00	17.7	
CBD	0.0400	2.82	0.282	
CBDV	0.0400	< LOQ	< LOQ	
CBN	0.0400	< LOQ	< LOQ	
CBG	0.0400	< LOQ	< LOQ	
CBC	0.0400	< LOQ	< LOQ	
THCV-A	0.0400	< LOQ	< LOQ	
CBDV-A	0.0400	< LOQ	< LOQ	
CBCA	0.0400	9.62	0.962	
Sum of tested Cannabinoids	0.0400	201.00	20.1	



Moisture Content

Date/Time Analyzed: 12/16/20 00:00
Analysis Method/SOP: SOP.T.40.010

Moisture: 18.6 %

"Total THC" and "Total CBD" are calculated values and are an Oregon reporting requirement (OAR 333-064-0100). For Cannabinoid analysis, only delta 9-THC, THCA, CBD, CBDA are ORELAP accredited analytes. Cannabinoid values reported for plant matter are dry weight corrected; Oregon Water Activity action level is 0.65Aw and Oregon Moisture Content action level is 15%, Samples above limit will be highlighted RED; FD = Field Duplicate; LOQ = Limit of Quantitation.

Stephanie Moon
Laboratory Director - 12/17/2020

Page 1 of 2

EVIO Labs Medford (pka Kenevir Research)
 540 East Vilas Road, Suite F, Central Point, OR 97502
 541-668-7444 / OLCC 010-1001626980D / www.EVIO Labs.com

Quality Control

Batch: M20L081 - SOP.T.30.050 Prep for Cannabinoids

Blank(M20L081-BLK1)				Extracted: 12/16/20 08:46		Analyzed: 12/16/20 22:42	
Analyte	Result	LOQ	Recovery Limits	Analyte	Result	LOQ	Recovery Limits
THCA	< LOQ	0.0400 (%)	< LOQ	delta 9-THC	< LOQ	0.0400 (%)	< LOQ
delta 8-THC	< LOQ	0.0400 (%)	< LOQ	THCV-A	< LOQ	0.0400 (%)	< LOQ
THCV	< LOQ	0.0400 (%)	< LOQ	CBDA	< LOQ	0.0400 (%)	< LOQ
CBD	< LOQ	0.0400 (%)	< LOQ	CBDV-A	< LOQ	0.0400 (%)	< LOQ
CBDV	< LOQ	0.0400 (%)	< LOQ	CBG	< LOQ	0.0400 (%)	< LOQ
CBGA	< LOQ	0.0400 (%)	< LOQ	CBN	< LOQ	0.0400 (%)	< LOQ
CBCA	< LOQ	0.0400 (%)	< LOQ	CBC	< LOQ	0.0400 (%)	< LOQ
Sum of tested Cannabinoid:	< LOQ	0.0400 (%)	< LOQ				

LCS(M20L081-BS1)				Extracted: 12/16/20 08:46		Analyzed: 12/16/20 22:58	
Analyte	% Recovery	LOQ	Recovery Limits	Analyte	% Recovery	LOQ	Recovery Limits
THCA	97.0	(%)	70-130	delta 9-THC	101	(%)	70-130
THCV	99.0	(%)	70-130	CBDA	97.9	(%)	70-130
CBD	96.3	(%)	70-130	CBG	108	(%)	70-130
CBGA	101	(%)	70-130	CBN	105	(%)	70-130
CBCA	92.1	(%)	70-130	CBC	104	(%)	70-130

Batch: M20L082 - SOP.T.40.010 Moisture Content

Blank(M20L082-BLK1)				Extracted: 12/16/20 00:00		Analyzed: 12/16/20 00:00	
Analyte	Result	LOQ	Recovery Limits	Analyte	Result	LOQ	Recovery Limits
Percent Moisture	100	(%)	< LOQ				



Stephanie Moon
 Laboratory Director - 12/17/2020

Page 2 of 2